

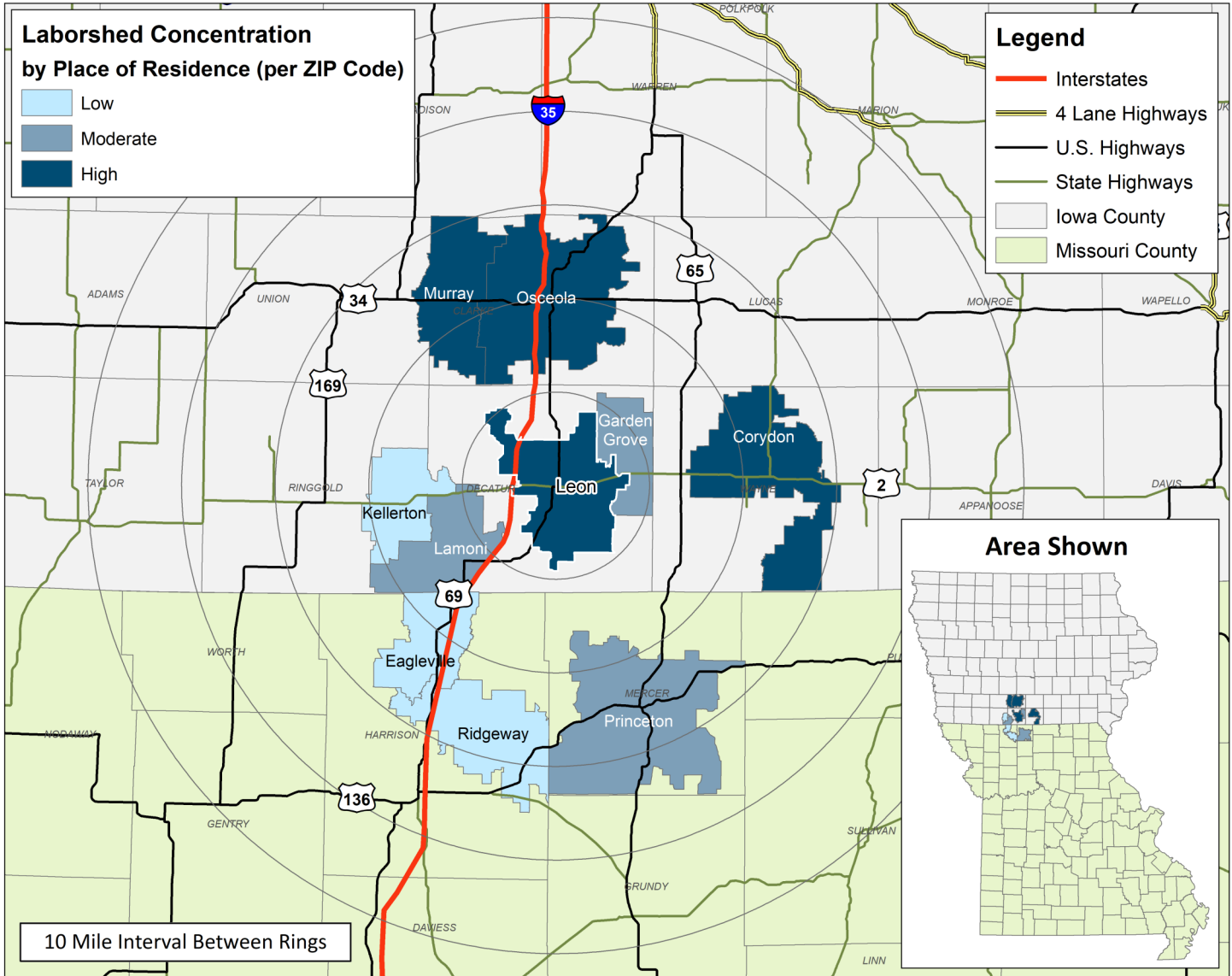
# LABOR CHARACTERISTICS

## FINANCIAL SERVICES



### LEON, IA LABORSHED AREA

CONCENTRATION OF RESPONDENTS WITHIN THE LABORSHED AREA  
WITH TRANSFERABLE EXPERIENCE/SKILLS BY PLACE OF RESIDENCE



Workers who have transferable experience/skills in the industry are currently commuting an average of 20 miles one way for work. Those who are likely to change/accept employment are willing to commute an average of 24 miles one way for the right employment opportunity.

FOR MORE INFORMATION REGARDING THE LEON, IA LABORSHED, CONTACT:

Decatur County Development Corporation  
207 N Main St., Leon, IA 50144  
Phone: (614) 442- 6511 | E-mail: [dcdc@grm.net](mailto:dcdc@grm.net)  
[www.dcdciowa.org](http://www.dcdciowa.org)

# LABOR CHARACTERISTICS



## FINANCIAL SERVICES

### ESTIMATED AVAILABLE LABOR PER OCCUPATIONAL CATEGORY:

- Accountants and Auditors - 87
- Billing and Posting Clerks - 46
- Bookkeeping, Accounting, and Auditing Clerks - 176
- Claims Adjusters, Examiners, and Investigators - 40
- Compliance Officers - 41
- Customer Service Representatives - 262
- Financial Analysts - 42
- Financial Managers - 40
- Insurance Claims and Policy Processing Clerks - 48
- Insurance Underwriters - 44
- Loan Officers - 174
- New Accounts Clerks - 47
- Personal Financial Advisors - 43
- Software Developers, Applications - 45
- Supervisors of Office and Administrative Support Workers - 131

AN ESTIMATED TOTAL OF **1,266** PEOPLE IN THE LABORSHED AREA

### UNDEREMPLOYMENT (ESTIMATED):

- Low hours - 0.0%
- Low income - 0.0%
- Mismatch of skills - 3.4% (15)
- Total - 3.4% (15)

*(Individuals counted only once when estimating Total Underemployment.)*



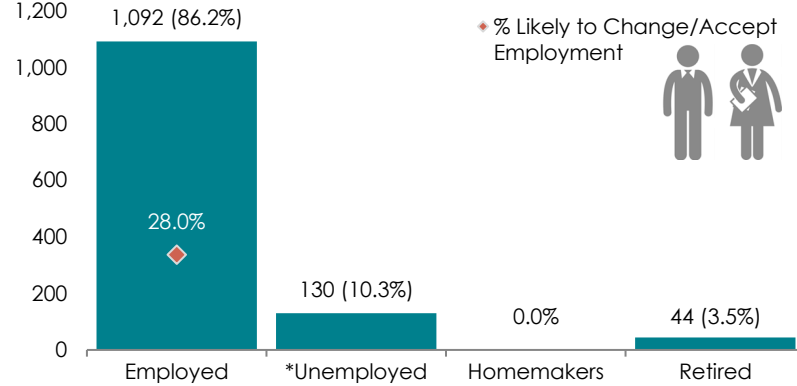
### CURRENT BENEFITS:



### DESIRED BENEFITS:



### ESTIMATED TOTAL BY EMPLOYMENT STATUS (PERCENTAGE):



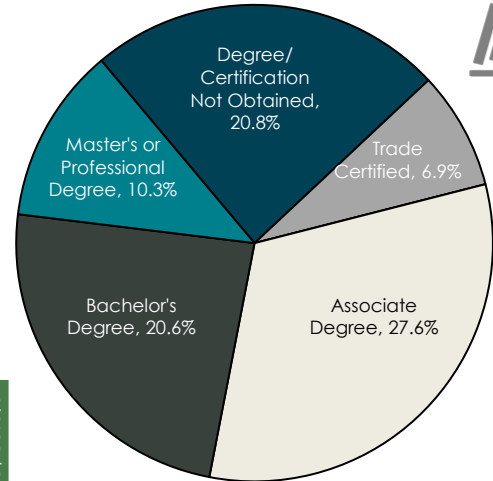
*\*Employment status is self-identified by the survey respondent. The unemployment percentage does not reflect the unemployment rate published by the U.S. Bureau of Labor Statistics, which applies a stricter definition.*

### EMPLOYMENT STATS:

- 51.7% paid an hourly wage
- 86.2% are/were employed full-time
- 13.8% are/were employed part-time
- 4.0% are/were self-employed
- 12.0% hold two or more jobs
- Currently working an average of 41 hours/week

### EDUCATIONAL LEVEL:

(86.2% HAVE AN EDUCATION BEYOND HIGH SCHOOL)



### TOP JOB SEARCH RESOURCES:

*(For those seeking employment opportunities, by use.)*

- Internet - 82.8%
  - [www.linkedin.com](http://www.linkedin.com)
  - [www.indeed.com](http://www.indeed.com)
- Networking through friends, family or acquaintances - 51.7%
- Private Employment Services - 27.6%
- Newspapers - 24.1%



# LABOR CHARACTERISTICS



## FINANCIAL SERVICES

OCCUPATION	OCCUPATIONAL CODE	MEAN WAGE	ENTRY WAGE	EXPERIENCED WAGE	MEDIAN WAGE	MEAN ANNUAL SALARY
Accountants and Auditors	13-2011	\$32.52	\$20.69	\$38.43	\$28.85	\$67,644
Billing and Posting Clerks	43-3021	\$19.27	\$16.18	\$20.81	\$18.13	\$40,080
Bookkeeping, Accounting, and Auditing Clerks	43-3031	\$18.23	\$12.55	\$21.07	\$17.90	\$37,918
Compliance Officers	13-1041	\$33.12	\$20.37	\$39.49	\$27.31	\$68,880
Customer Service Representatives	43-4051	\$17.86	\$12.57	\$20.50	\$17.17	\$37,139
Financial Managers	11-3031	\$47.34	\$28.38	\$56.81	\$46.67	\$98,460
First-Line Supervisors of Office and Administrative Support Workers	43-1011	\$24.99	\$17.12	\$28.93	\$23.30	\$51,987
Insurance Sales Agents	41-3021	\$19.40	\$13.65	\$22.28	\$14.50	\$40,355
Loan Officers	13-2072	\$34.30	\$25.99	\$38.45	\$32.11	\$71,340
New Accounts Clerks	43-4141	\$20.13	\$18.24	\$21.07	\$18.29	\$41,867
Tellers	43-3071	\$15.45	\$12.86	\$16.74	\$14.26	\$32,137

The 2023 Iowa Wage data for the Leon, IA Laborshed area was produced by the Labor Force & Occupational Analysis Bureau to provide communities local information on wages by occupation. The source of the wage and employment data is based on the May 2022 OEWS estimates. Additional occupational wage and employment data can be found at [www.iowalmi.gov/laborshed](http://www.iowalmi.gov/laborshed).

Balance of data compiled by Iowa Workforce Development using Laborshed data released in 2023.

